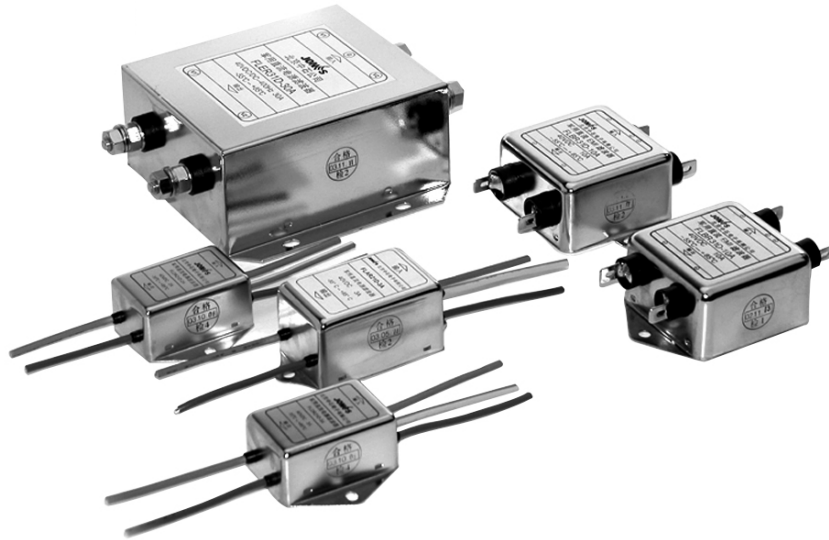




直流电源滤波器 DC Power Supply Filter



产品特征 Features

- 良好的共模、差模抑制性，能更好的抑制线-线、线-地之间的电磁干扰。
Excellent attenuation performance to eliminate the common-mode and differential-mode EMI.
- 专为抑制直流电源线干扰而设
Special design for DC power line.
- 便于安装 Easy to install

应用场合 Applications

通讯设备、基站、直放站、程控交换机、复印设备、光端机、开关电源等直流供电的各种电子设备。
Switching gear multiplex , SDH , PDH ,
Switch-mode power-supply , UPS.

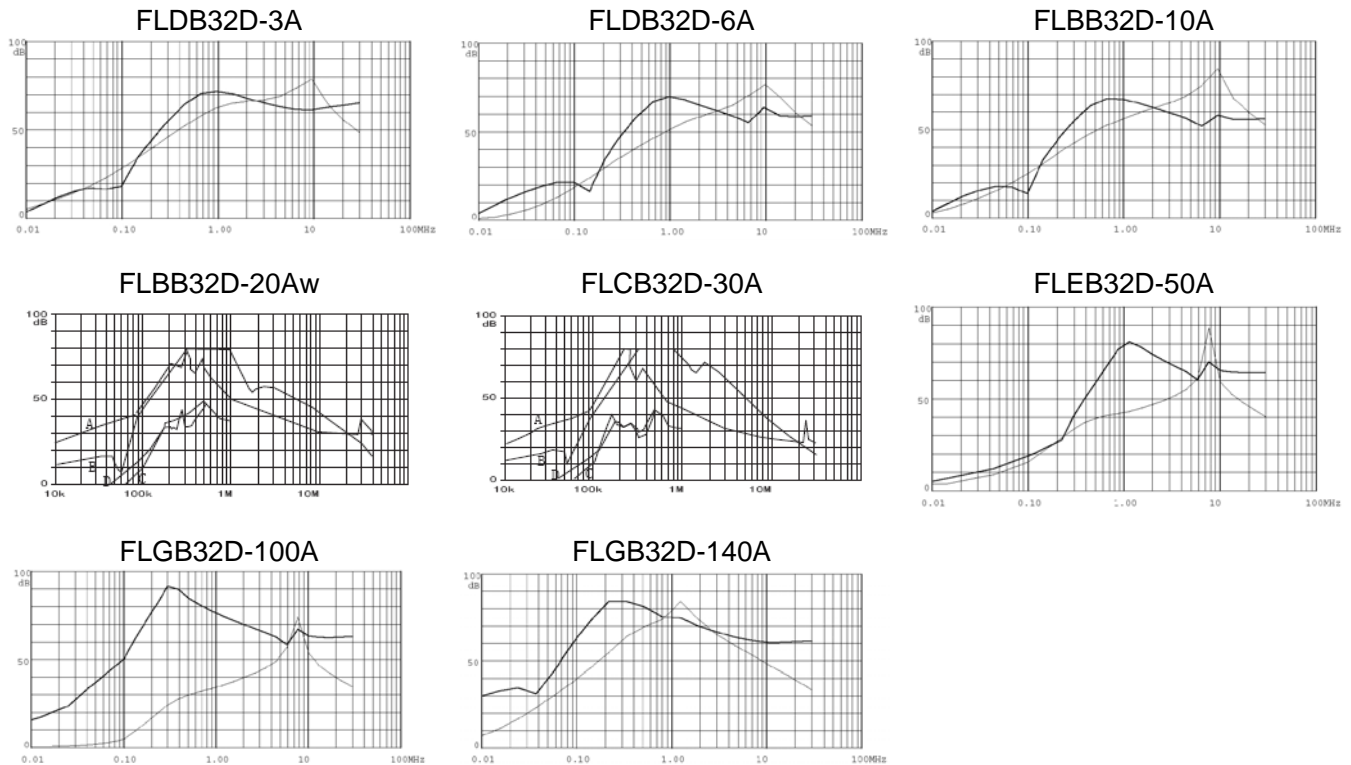
规格表 Specification

产品型号 Filter P/N	端接方式 I/O connection		额定电流 Current rating at 40°C	额定电压 Max. operating voltage	工作频率 Operating frequency	耐压等级 Hipot test voltage	气候类别 Climatic category
	输入 Input	输出 Output					
FLDB32D-3A			3A	80VDC	DC	160VDC (line/line) 500VDC (lines/case)	25/85/21
FLDB32D-6A			6A				
FLBB32D-10A			10A				
FLBB32D-20Aw			20A				
FLCB32D-30A			30A				
FLEB32D-50A			50A				
FLGB32D-100A			100A				
FLGB32D-140A			140A				

差损曲线 Insertion Loss

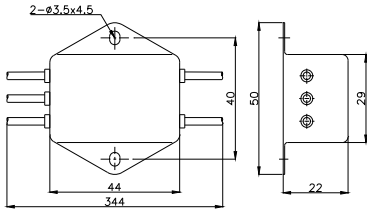
插入耗损是参考 CISPR17标准,在50Ω系统条件下测定的 (Per CISPR 17 , Z=50Ω)

—— 共模 CM common mode

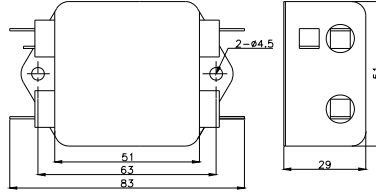


外形尺寸图 Dimensional Drawing (unit: mm)

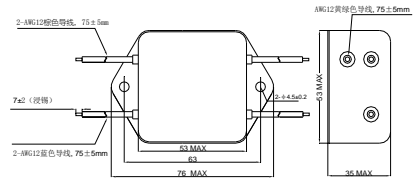
FLDB32D-3A FLDB32D-6A



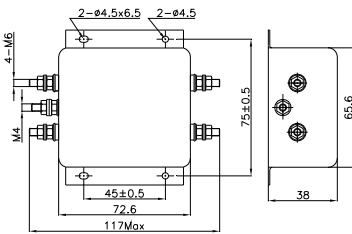
FLBB32D-10A



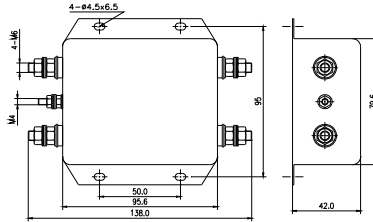
FLBB32D-20Aw



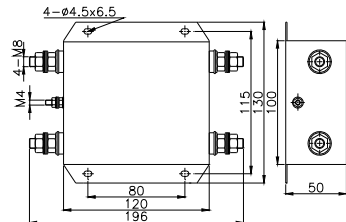
FLCB32D-30A



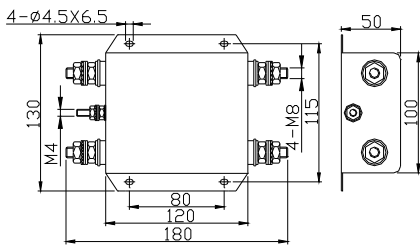
FLEB32D-50A



FLGB32D-100A



FLGB32D-140A



电路原理图 Circuit diagram

