



梯度滤波器 Gradient Filter



产品特征 Features

- 优异的共模、差模抑制特性，能更好的抑制线-线、线-地之间的电磁干扰。 Excellent suppression performance to eliminate the common-mode and differential-mode EMI
- 特殊的设计，适于抑制直流电源的电磁干扰。 Special design for DC power line
- 便于安装。 Easy to install

应用场合 Applications

主要用在MR核磁设备上。
Mainly used in MR imaging equipment.

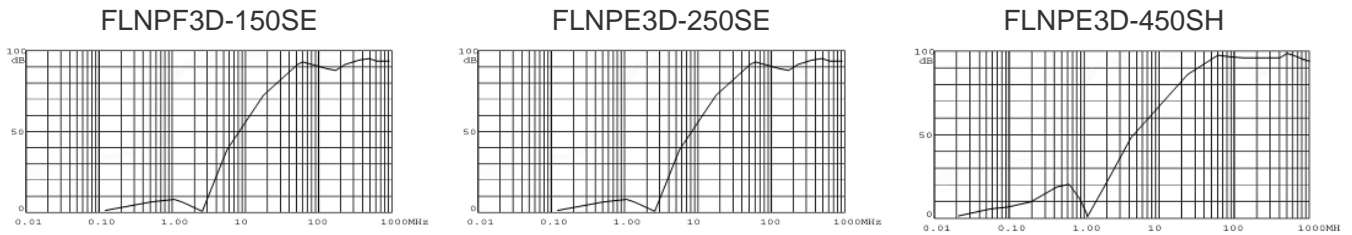
规格表 Specification

产品型号 Filter P/N	端接方式 I/O connection		额定电流 Current rating at 40°C	额定电压 Max. operating voltage	耐压等级 Hipot test voltage	气候类别 Climatic category
	输入 Input	输入 Input				
FLNPF3D-150SE			150A	400VDC	2300VDC(LINE/CASE)	25/85/21
FLNPE3D-250SE			250A	500VDC	2500VDC(LINE/CASE)	
FLNPE3D-450SH			450A	1000VDC	3000 VDC(LINE/CASE)	

差损曲线 Insertion Loss

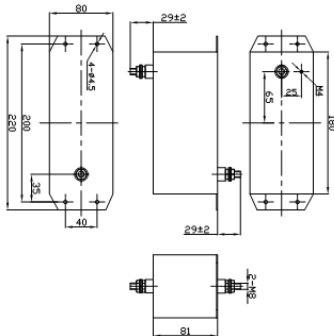
插入耗损是参考 CISPR17标准,在50Ω系统条件下测定的 (Per CISPR 17 , Z=50Ω)

—— 共模 CM common mode

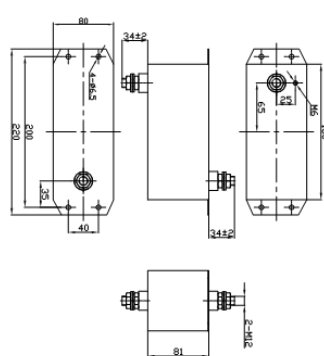


外形尺寸图 Dimensional Drawing (unit: mm)

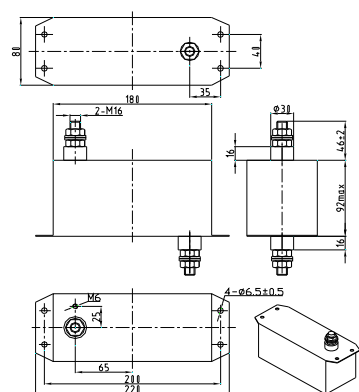
FLNPF3D-150SE



FLNPE3D-250SE



FLNPE3D-450SH



电路原理图Circuit diagram

