



PCB系列滤波器 PCB Series Filters



产品特征 Features

- 良好的共模、差模抑制性，能有效的抑制线-线、线-地之间的电磁干扰。
Good filtering performance of common-mode and differential-mode both for line-line and line-ground interference.
- 结构紧凑，插针引出，适于PCB安装
Low profile and compact design, pin configurations for PCB mount.
- 低泄漏电流 Low leakage current

应用场合 Applications

适用于各种电子设备在 PCB 板级上控制 EMI 干扰的场合。

Electronics device required to control EMI interference on PCB level. Medical appliance ($I_{leak} < 0.3 \text{ mA}$)

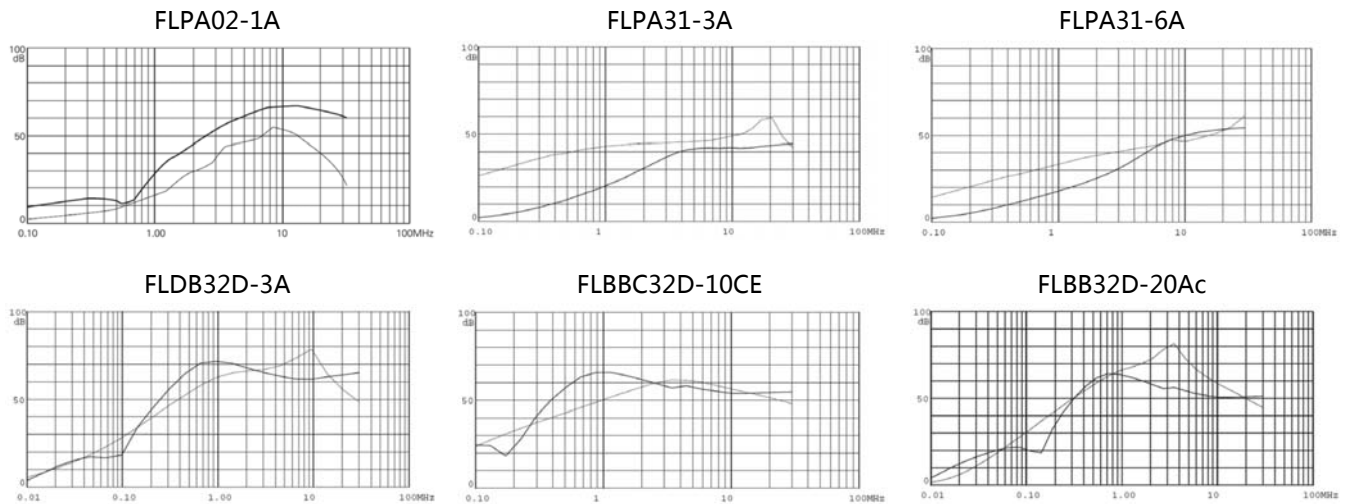
规格表 Specification

产品型号 Filter P/N	端接方式 I/O connection		额定电流 Current rating at 40°C	额定电压 Max. operating voltage	工作频率 Operating frequency	最大泄漏电流 Leakage current	耐压等级 Hipot test voltage	气候类别 Climatic category
	输入 Input	输出 Output						
FLPA02-1A			1A	115/250 VAC	50/60 Hz	< 0.3mA 250VAC, 50Hz	1768VDC (line/line) 2000VAC (lines/case)	25/85/21
FLPA31-3A			3A					
FLPA31-6A			6A					
FLDB32D-3A			3A	80VDC	DC	----	160VDC (line/line) 500VDC (lines/case)	
FLBBC32D-10CE			10A					
FLBB32D-20Ac			20A					

差损曲线 Insertion Loss

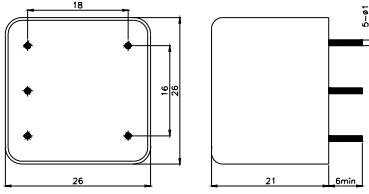
插入耗损是参考 CISPR17标准,在50Ω系统条件下测定的 (Per CISPR 17 , Z=50Ω)

—— 共模 CM common mode

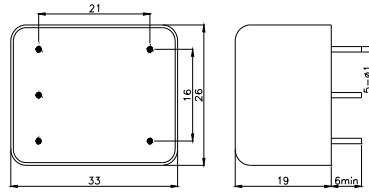


外形尺寸图 Dimensional Drawing (unit: mm)

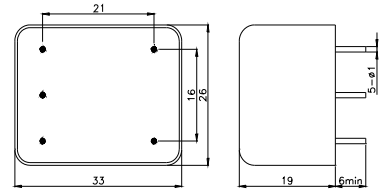
FLPA02-1A



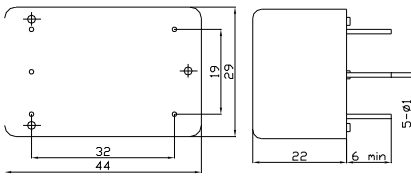
FLPA31-3A



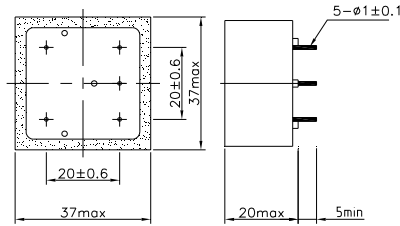
FLPA31-6A



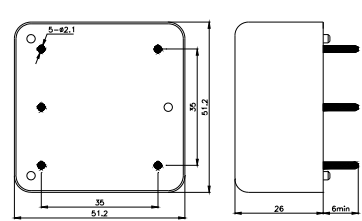
FLDB32D-3A



FLBBC32D-10CE

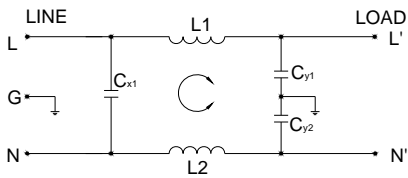


FLBB32D-20Ac

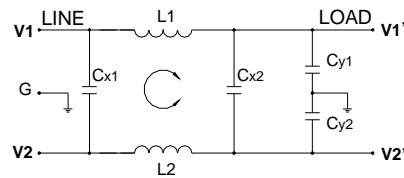


电路原理图Circuit diagram

FLPA02-1A FLPA31-3A FLPA31-6A



FLDB32D-3A FLBB32D-20Ac



FLBBC32D-10CE

